

# Accessibility in Higher Education Today

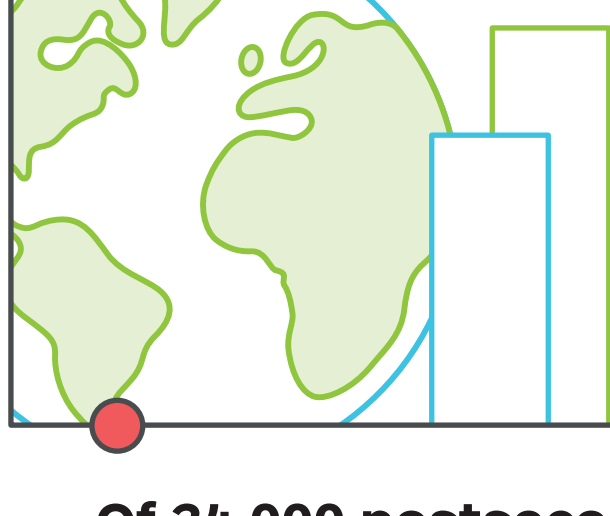
Access to postsecondary education (PSE) is integral to achieving income security and realizing one's life goals. It should be a right equally granted to all. However, for individuals with disabilities, lack of accessibility in education continues to be a barrier. As a result, individuals with disabilities are less likely to attend and complete PSE than those without disabilities.

At D2L, we believe learning technologies should never limit learning opportunities. We design our products with empathy to enable and empower learners with disabilities. Brightspace is the learning platform built for people who care deeply about helping all learners reach their potential by promoting inclusive education.

This infographic looks at the current state of accessible education around the world. While we have come far together, there is still much ground to cover to achieve full equality for every learner. The need for change is great, and we are fully committed to championing that cause.

## #2

Accessibility and universal design's ranking in key issues in teaching and learning (2018 edition).<sup>1</sup>



**15%** of the world's population lives with some form of disability.<sup>2</sup>

**19%** of undergraduates reported having a disability.<sup>3</sup>

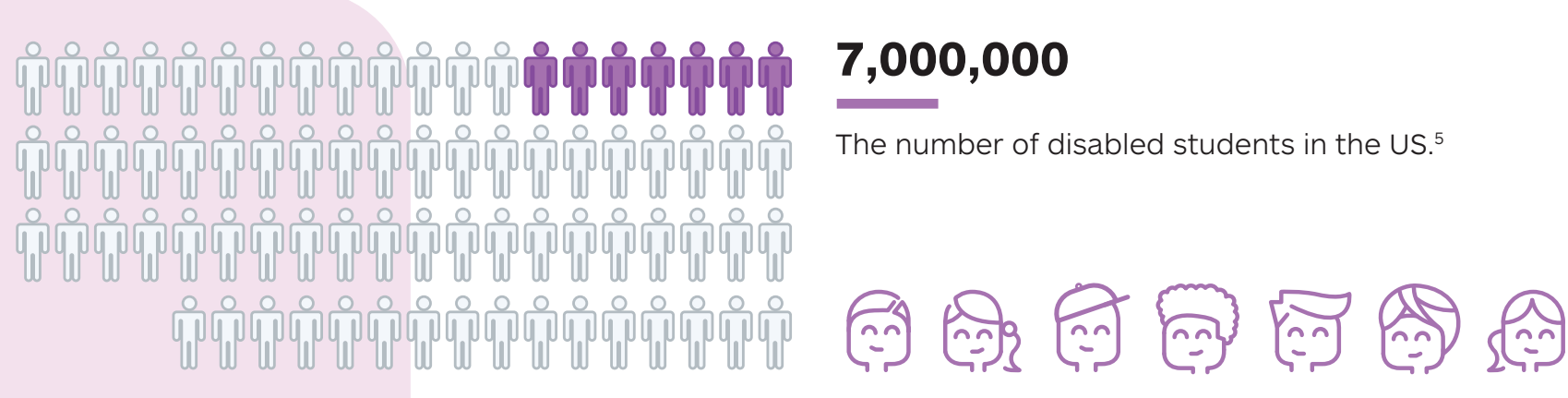
## Of 34,000 postsecondary students surveyed at 32 schools across Canada:

- 2%** were diagnosed with or treated for obsessive-compulsive disorder in the previous year.
- 4%** were diagnosed with ADHD or a learning disability.
- 5%** were diagnosed with a chronic illness such as cancer, diabetes, or autoimmune diseases.
- 10%** were diagnosed with or treated for depression.
- 12%** were diagnosed with anxiety.<sup>4</sup>



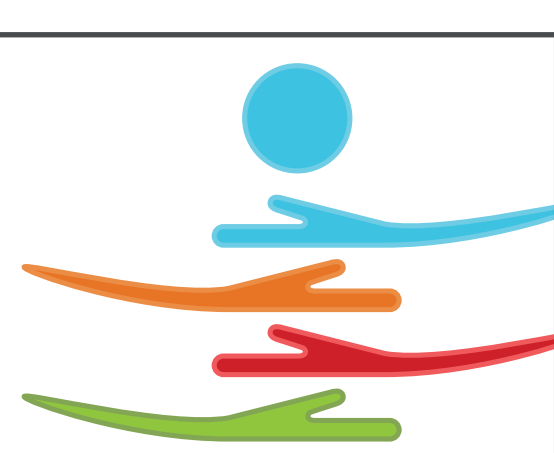
## 7,000,000

The number of disabled students in the US.<sup>5</sup>



## 2006

The year the UN Convention on the Rights of Persons with Disabilities (UNCRPD) was adopted and signed by most countries in the world. Article 24 of the UNCRPD focuses on the right to education and, among other commitments, requires states to ensure equal access to vocational training, adult education, and lifelong learning.<sup>6</sup>



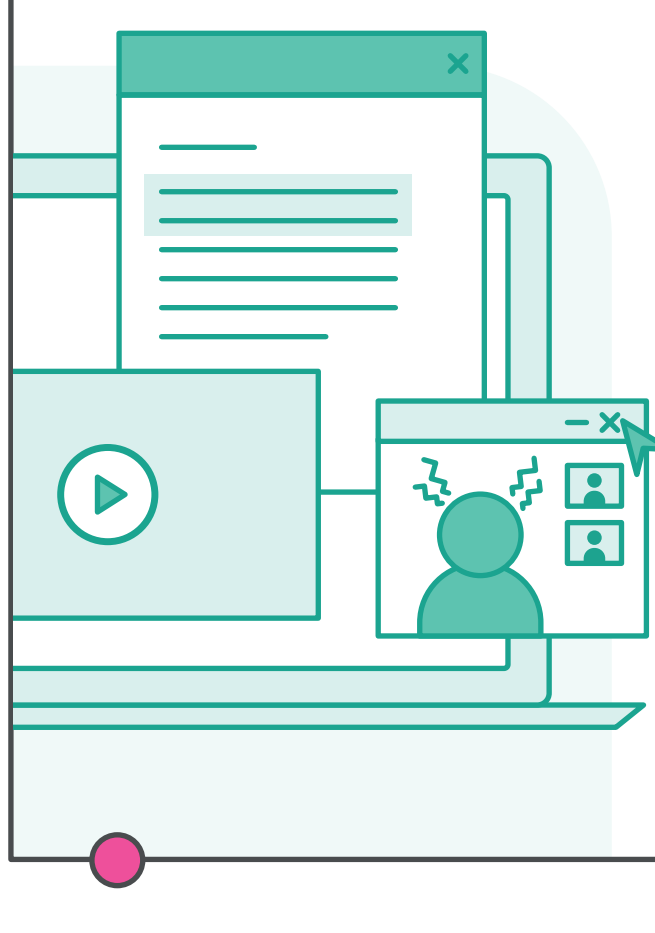
## 4.5%

Average university completion rate for students (25–54) with disabilities in low and middle-income countries.<sup>7</sup>

**39%** of disabled students stated they have a "high level of confidence in their ability to use the internet and other communication devices to keep up with information."<sup>8</sup>

**86%** of students with a diagnosed mental health issue will drop out of college before completing their degree.<sup>9</sup>

**23%** of disabled adults say they "never go online."<sup>10</sup>



## 1800

Number of complaints filed by a single individual aimed at public-facing websites of schools ranging from elementary to university.<sup>11</sup>

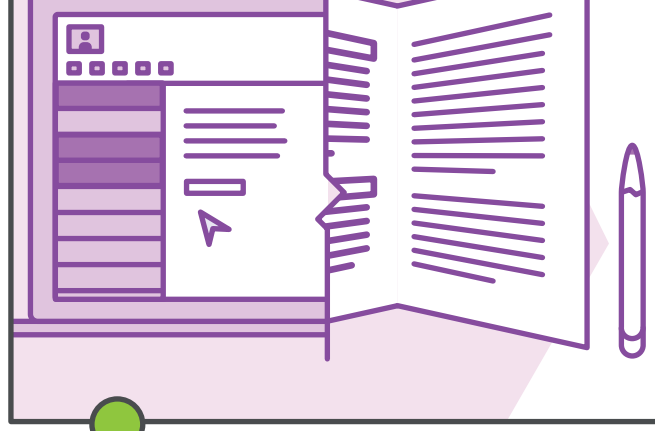
**750** Number of lawsuits filed over the issue of public-facing websites.<sup>12</sup>

**7** Number of those lawsuits directed at higher education.<sup>13</sup>



## 60%

Percentage of the world's population with online access and impacted by the "digital divide".<sup>14</sup>



## \$7000

Cost per semester in addition to regular tuition for a college to support students with autism.<sup>15</sup>

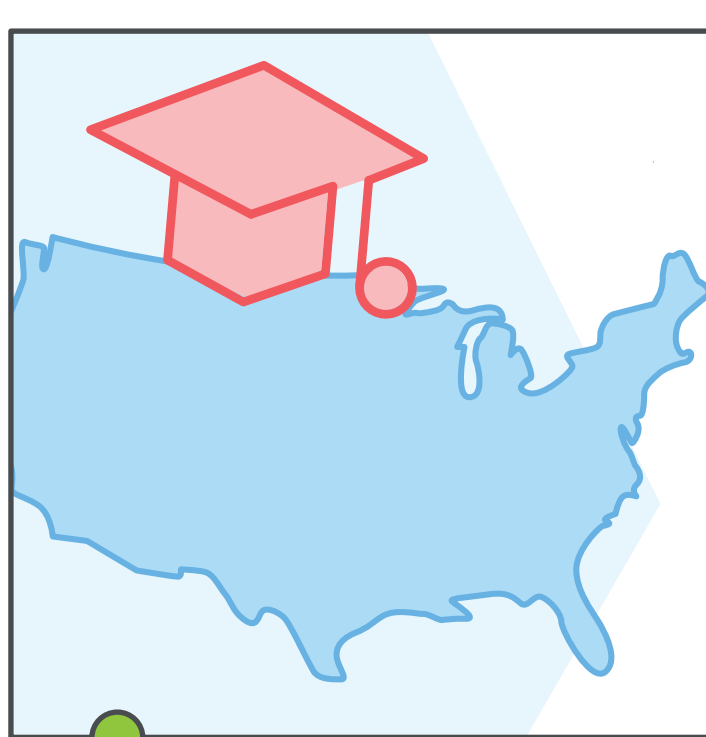


## 1975

Year the Individuals with Disabilities Education Act (IDEA) was passed in the United States. The main intent was to make sure that over 40 million Americans would have more accessibility and mobility.<sup>16</sup>

## Section 504

of the Rehabilitation Act of 1973 mandates that US postsecondary institutions provide equal access to education, including support services, to students with disabilities.<sup>17</sup>



## 98%

of institutions that enroll students with disabilities provide at least one support service or accommodation.<sup>18</sup>

**88%** of institutions that enroll students with disabilities provide alternative exam formats or additional test time.<sup>19</sup>

**77%** of institutions that enroll students with disabilities provide tutors to assist with ongoing coursework.<sup>20</sup>

**69%** percent of institutions that enroll students with disabilities provide readers, classroom notetakers, or scribes.<sup>21</sup>

**62%** of institutions that enroll students with disabilities provide registration assistance or priority class registration.<sup>22</sup>



## 55–58%

of institutions that enroll students with disabilities provide textbooks on tape and adaptive equipment or technology, such as assistive listening devices or talking computers.<sup>23</sup>



## 45%

of institutions that enroll students with disabilities provide sign language interpreters or transliterators.<sup>24</sup>



## Top 10

Best colleges in the US for students with autism:

- |                            |   |
|----------------------------|---|
| 1. Syracuse University     | 6. Grand Valley State University            |
| 2. University of Alabama   | 7. Drexel University                        |
| 3. George Mason University | 8. Appalachian State University             |
| 4. University of Arizona   | 9. University of Michigan                   |
| 5. Kent State University   | 10. University of Connecticut <sup>25</sup> |



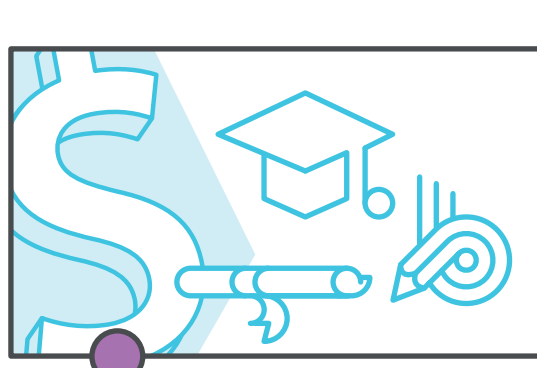
## 3X

By 2023, the number of people with disabilities employed will triple due to artificial intelligence and emerging technologies reducing barriers to access.<sup>26</sup>



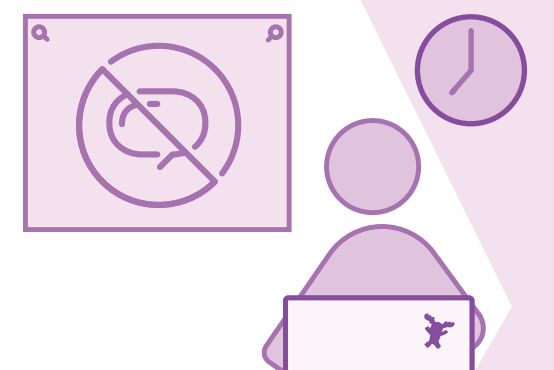
## 1000+

Scholarships in the US available to those who suffer from all types of mental and/or physical disabilities.<sup>27</sup>



## 60

Number of colleges and universities in the US that have added some form of support program for students with autism beyond the academic accommodations required by federal law, such as extended testing time and quiet environments for exams.<sup>28</sup>



D2L is committed to helping you address the accessibility needs of your institution. To read more about some of our accessible features and to connect with a product expert,

Visit:

[D2L.com/Higher-Education/Accessibility-In-Higher-Education](https://www.d2l.com/Higher-Education/Accessibility-In-Higher-Education)

1 <https://www.educause.edu/eli/initiatives/key-issues-in-teaching-and-learning-2018>  
 2 <https://www.universityworldnews.com/post.php?story=20200122104602834>  
 3 <https://nces.ed.gov/fastfacts/display.asp?id=60>  
 4 <https://www.macleans.ca/society/health/how-universities-are-helping-students-with-invisible-disabilities/>  
 5 <https://www.pewresearch.org/fact-tank/2020/04/23/as-schools-shift-to-online-learning-amid-pandemic-heres-what-we-know-about-disabled-students-in-the-u-s/>  
 6 <https://www.universityworldnews.com/post.php?story=20200122104602834>  
 7 <https://www.universityworldnews.com/post.php?story=20200122104602834>  
 8 <https://www.pewresearch.org/fact-tank/2020/04/23/as-schools-shift-to-online-learning-amid-pandemic-heres-what-we-know-about-disabled-students-in-the-u-s/>  
 9 <https://www.ncbi.nlm.nih.gov/pmc/articles/PMC7332748/>  
 10 Ibid  
 11 <https://er.educause.edu/articles/2017/12/the-section-508-refresh-and-what-it-means-for-higher-education>  
 12 Ibid  
 13 Ibid  
 14 <https://www.weforum.org/agenda/2020/03/3-diagnoses-coronavirus-is-reshaping-education-and-what-changes-might-be-here-to-stay/>  
 15 <https://www.disabilityscoop.com/2020/02/28/as-diagnoses-rise-colleges-add-autism/27896/>  
 16 <https://www.disabled-world.com/disability/education/scholarships/> <https://www.ncbi.nlm.nih.gov/pmc/articles/PMC7332748/>  
 17 <https://www.ncbi.nlm.nih.gov/pmc/articles/PMC7332748/>  
 18 <https://nces.ed.gov/surveys/peqi/publications/2000092/>  
 19 Ibid  
 20 Ibid  
 21 Ibid  
 22 Ibid  
 23 Ibid  
 24 Ibid  
 25 <https://www.collegechoice.net/rankings/best-colleges-for-students-with-autism/>  
 26 <https://questoraclecommunity.org/learn/blogs/gartner-predictions-for-2020/#:~:text=AI%20increases%20Accessibility,participants%20with%20disabilities%20are%20employed.>  
 27 <https://www.disabilityawards.ca/>  
 28 <https://www.disabilityscoop.com/2020/02/28/as-diagnoses-rise-colleges-add-autism/27896/>