

# 4 Ways iLearnNYC Supports Principals

Principals lead their schools through an ever-changing environment. This requires carefully balancing many moving parts and keeping track of many details throughout the day. When schools adopt a single-system approach that improves communication and insights, facilitates professional learning opportunities, and is impactful at every grade level, these moving parts become easier to manage. Here are four ways **iLearnNYC** powered by D2L Brightspace supports the priorities of principals:



## Create a Centralized Learning Hub

Provide robust tools that adapt to the unique needs of each teacher. Create a schoolwide homepage that becomes an information hub of announcements, the code of conduct and other important information. Allow teachers to keep using the tools they love but in a simpler, more secure way by leveraging existing integrations with all NYCDOE systems. This hub of learning activity makes everyone's life easier.



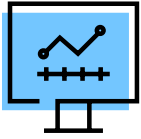
## Support Learning Continuity

Make it easy to continue teaching, learning and administration, regardless of circumstances, by accessing iLearnNYC from anywhere at any time, no matter what device you're on. Plus, the transition into the classroom is seamless for substitute teachers with easy enrollment.



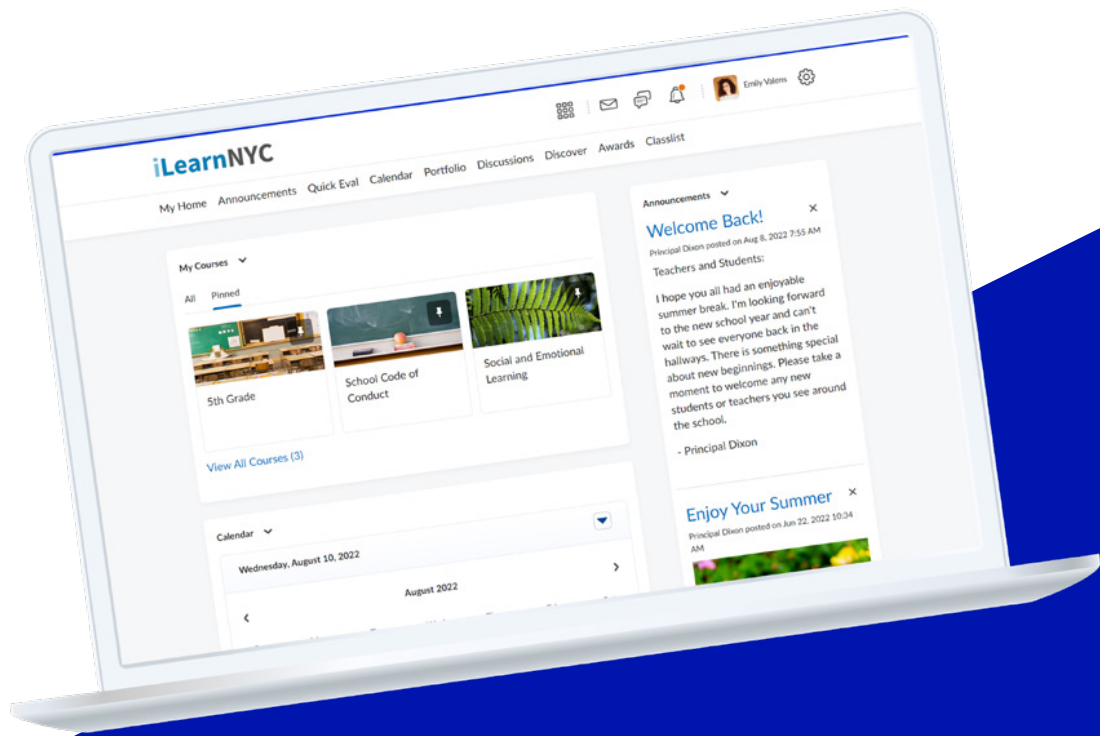
## Deliver, Track and Personalize Professional Learning

Meet the desire for continued growth and improve retention by having teachers self-enroll in professional learning opportunities through Discover. Or create and track personalized learning experiences for teachers using the Manager Dashboard.



## Access Important and Impactful Performance Data

Get a high-level overview of school performance through customized reports and the Data Hub. With the Insights Dashboards in Performance+, schools don't need a dedicated data analyst to organize and interpret information, but can instead use strategic, pre-designed dashboards that are easy to understand and provide actionable insights that help with decision-making.



## What is iLearnNYC?

Designed to help students of all ages reach their potential, iLearnNYC powered by D2L Brightspace is a learning management system (LMS) that serves as an all-in-one platform to support teaching and learning in face-to-face, hybrid and online classrooms. By using iLearnNYC, teachers' daily work of planning, instruction, differentiation, assessment and communication is made easier—all while students thrive in the personalized, accessible and modern environment of the LMS.

[GET STARTED HERE >](#)

